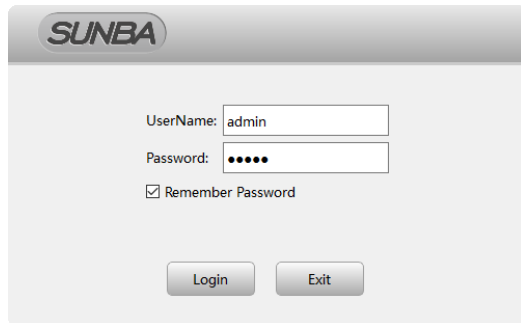


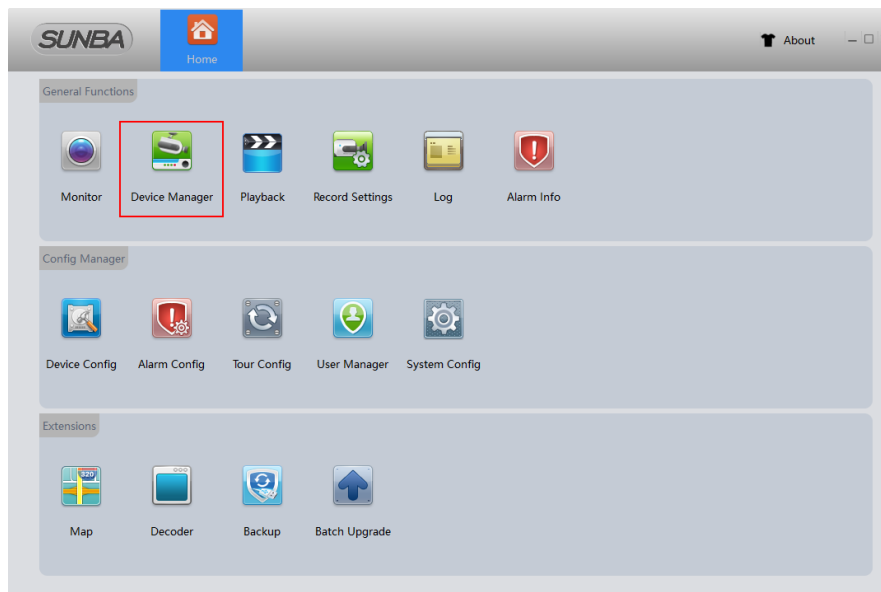
# How to add Sunba camera via VMS for initial setup?

Disclaimer: If you are using a non-Sunba IP camera, please read the full instruction or manually add the camera in Device Manager.

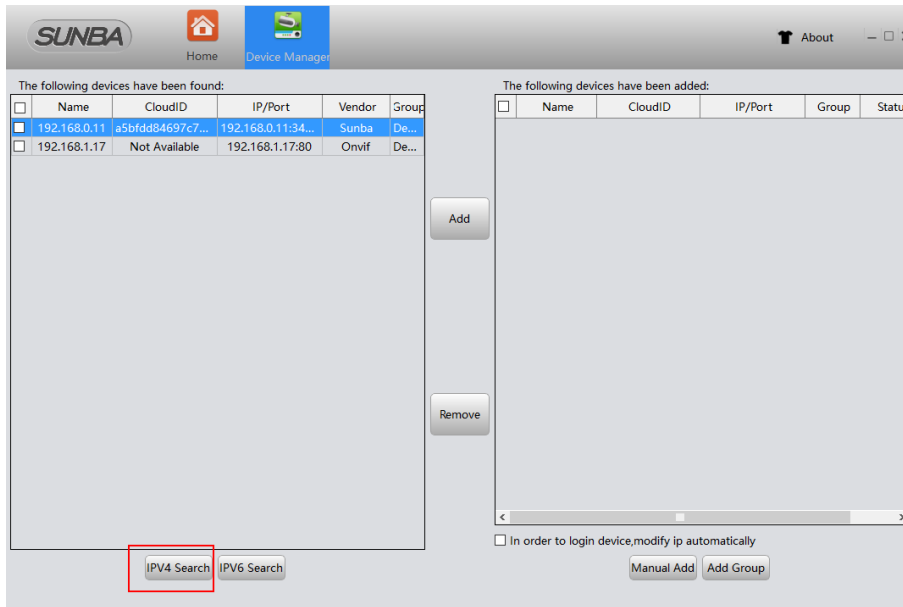
1. After the camera has been properly connected (to a router or to a PoE+ injector/switch), please open VMS and click "Login" (the username/password for logging into the VMS program is admin/admin).



2. Open Device Manager



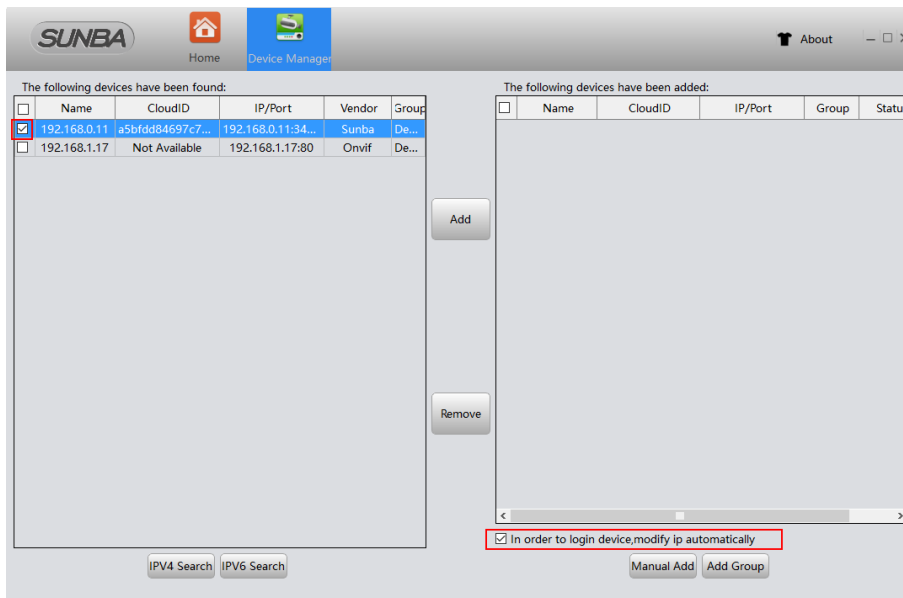
3. Your Sunba camera should show up on the left zone automatically with a default IP of **192.168.1.10**. Click **IPV4 Search** if you haven't seen your camera.



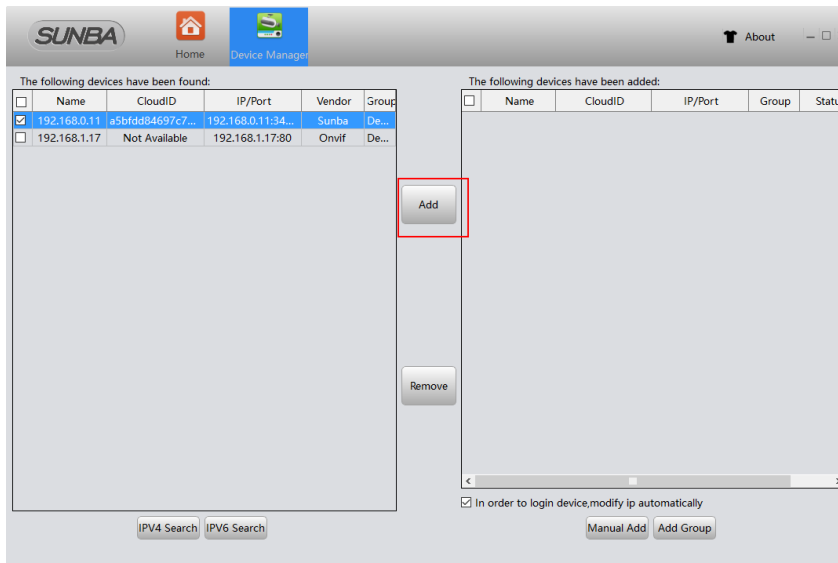
Try the following if no device shows up:

- A. Temporarily disable the firewall if your camera.
- B. Connect the camera directly to your parental router.
- C. Connect the camera directly to your PC/Mac for testing.
- D. Contact [support@sunba.net](mailto:support@sunba.net)

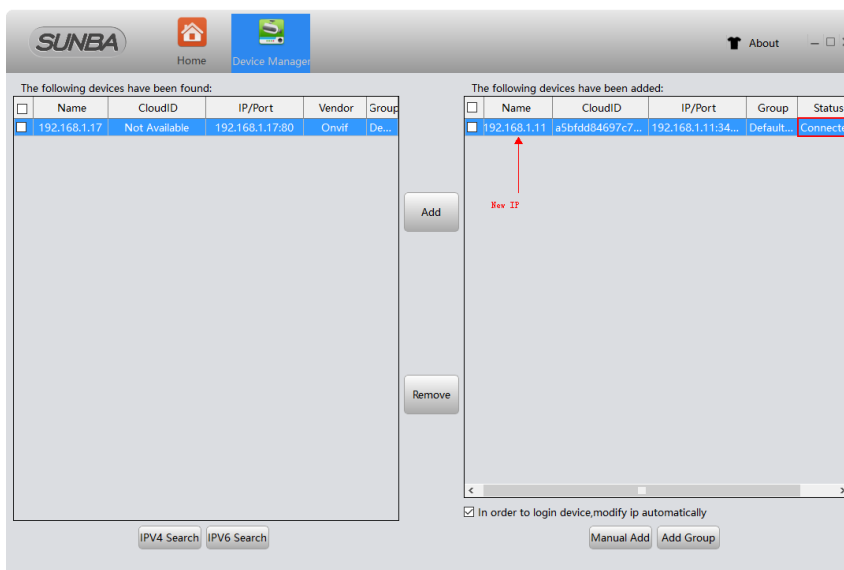
4. **Select** the device you want to add and select **“in order to login device, modify IP automatically”**.



5. Click "add" to add the camera

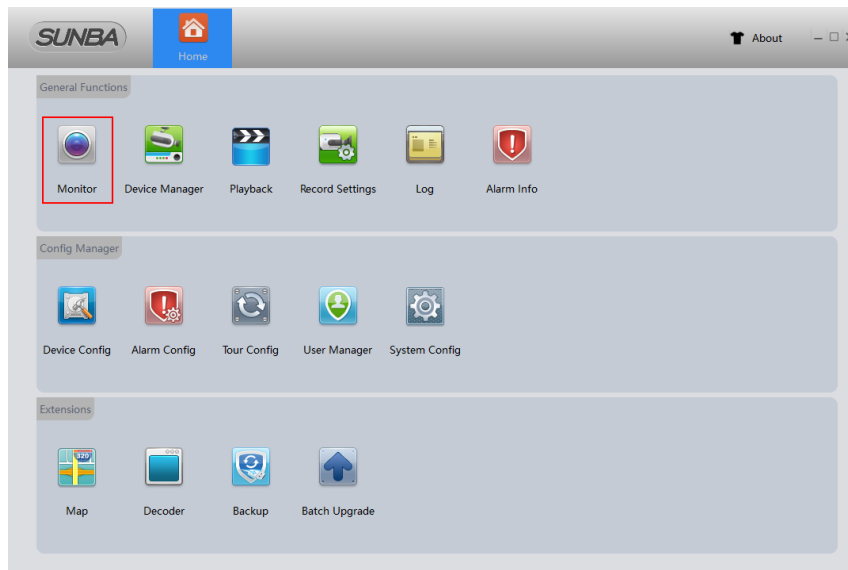


6. The camera will be automatically connected and changed to a correct IP matching local network. You can modify this IP later.



## 7. Live View

Go to **Home** panel and select **“Monitor”**.



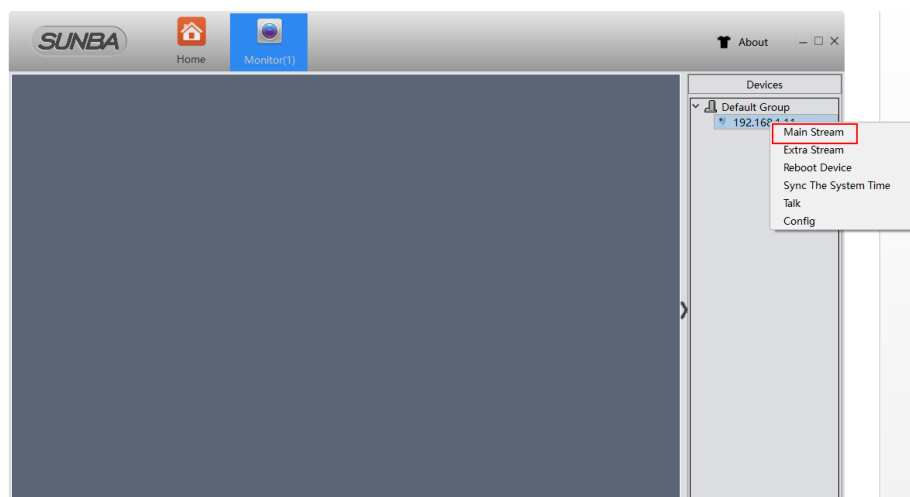
Then **right-click** the device and select **“main stream”**.

**Note:**

main stream = clear video


extra stream = fluent video

Please select the correct stream according to the network quality.



SUNBA Home Monitor(1) About

2017-09-16 02:11:11



CAM01

VMS CPU State: 8%  
ALL CPU State: 20%  
Memory State: 211MB

25 36 64

Devices

- Default Group
  - 192.168.1.11

View